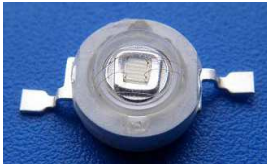


## MODEL NO: COSMIC-1WGGB-1

<ul style="list-style-type: none"><li>■ High-Power LED Type</li><li>■ Size (mm): <math>\Phi 6 \times 5.1</math></li><li>■ Emitting Color: Pure Green</li><li>■ SMT package</li><li>■ RoHS Compliant</li></ul>	
---	--

<ul style="list-style-type: none"><li>■ Decorative lighting</li><li>■ Architectural lighting</li><li>■ Interior automotive</li><li>■ Illuminations</li></ul>
--



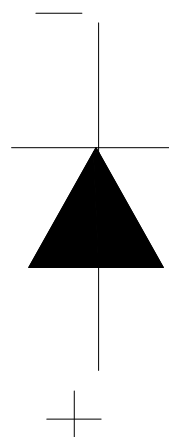
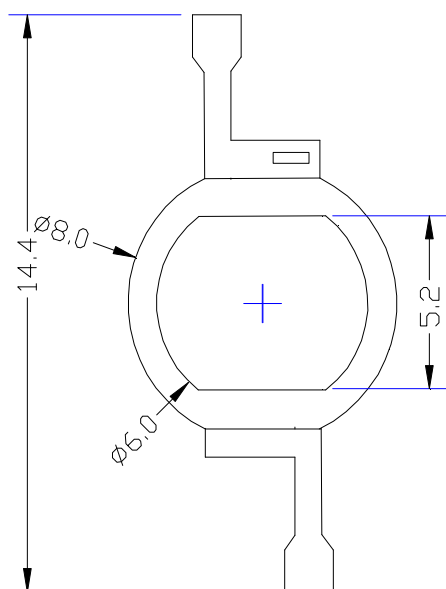
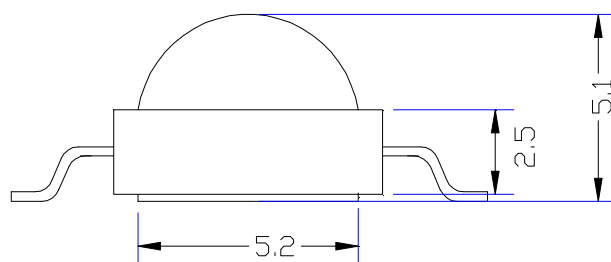
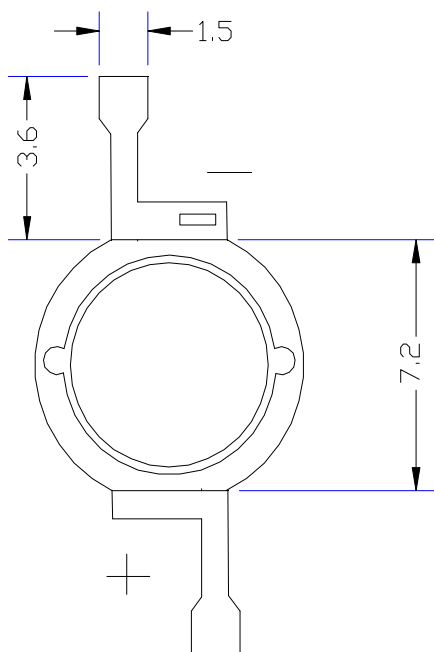
005



CUSTOMER APPROVED SIGNATURES	APPROVED BY	CHECKED BY	PREPARED BY

MODEL NO:COMSIC-1WGGB-1

## ■ Mechanical Dimensions



### Notes:

1. Dimension in millimeter, tolerance is  $\pm 0.2$ mm.

3. The specifications, characteristics and technical data described in the datasheet are subject to change without prior notice.

MODEL NO:COMSIC-1WGGB-1

## ■ Absolute Maximun Ratings(Ta=25° C)

Items	Symbol	Absolute maximum Rating	Unit
Forward Current(DC)	IF	350	mA
Peak Forward Current*	IFP	500	mA
Power Dissipation	PD	1000	Mw
Operation Temperature	Topr	-40° C+85° C	°C
Storage Temperature	Tstg	-40°C+100°C	°C
Reverse Voltage	VR	5	V

## ■ Typical Electrical &Optical Charcteristics(Ta=25°C)

Items	Symbol	Condition	Min.	Typ.	Max	Unit
Forward Voltage	VF	IF = 350mA	3.00	---	3.3	V
Reverse Current	IR	VR = 5V			5	uA
Dominant Wavelength	$\lambda$ (D)	IF = 350mA	520	---	522	nm
Luminous Flux	$\Phi_V$	IF = 350mA	100		110	LM
50% Power Angle	2 $\theta_{1/2}$	IF = 350mA	---	120	---	Deg

## ■ Material

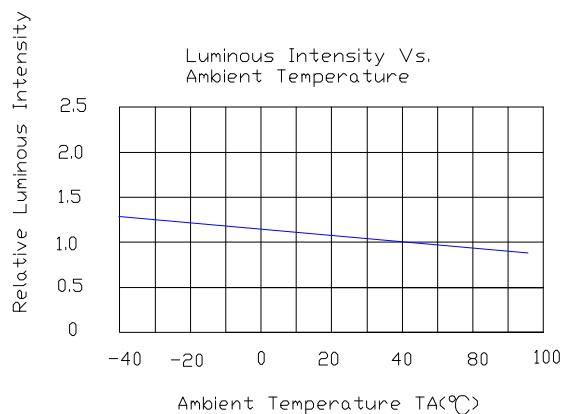
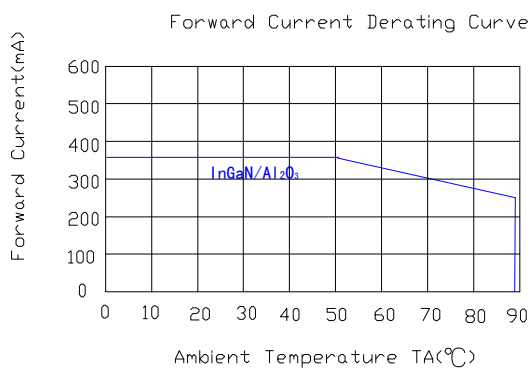
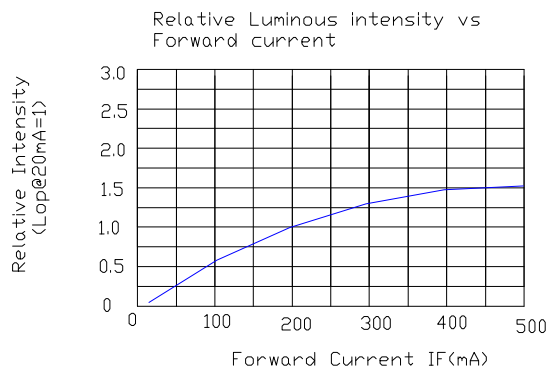
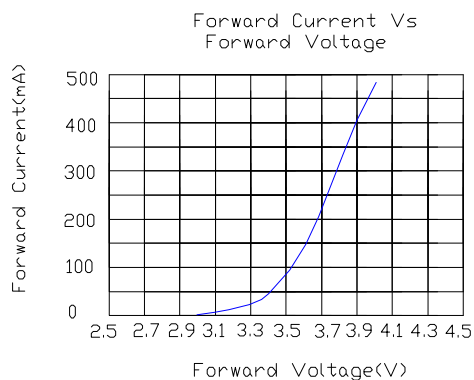
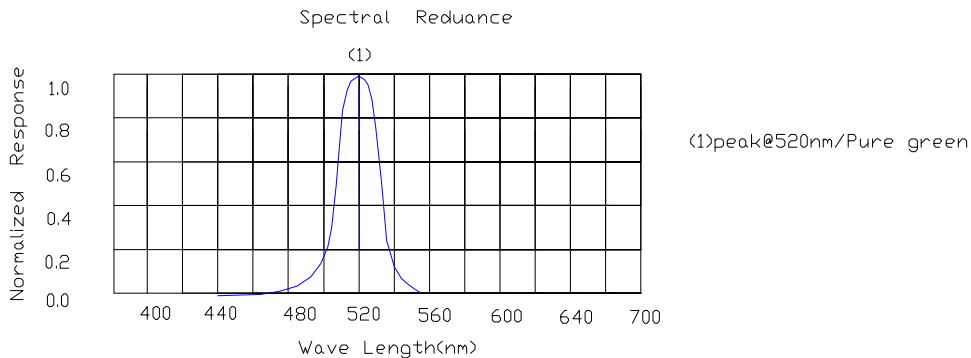
Item	Reflector	Wire	Encapsulate	Chip
Material	PPA	Gold	Silicone	InGaN

Note:

- 1.Luminous Intensity is based on the Foryard standards.
- 2.Pay attention about static for InGaN

## Model No.: FYLP-1WRGGB-1

### Typical Electrical/Optical Characteristics Curves(Ta=25° C Unless Otherwise Noted)



### Radiation pattern.

