

Technical Data Sheet

Product Name: 0805 High Bright White Chip LED

Part Number: HU-0805UWC (5000K-14000K)

Customer: _____

Customer PN: _____

Version: A.2

Date: 2015-10-16

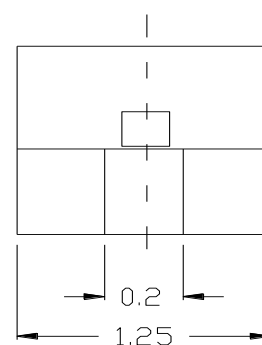
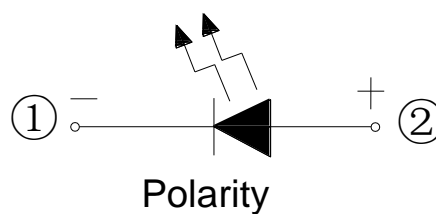
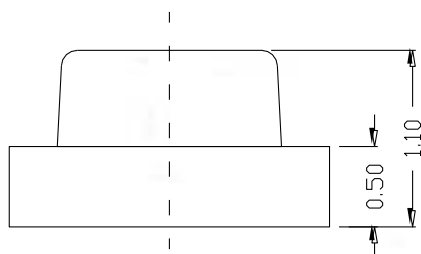
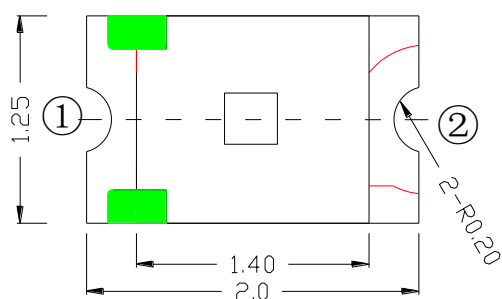
<h2>Customer Approval</h2>		

1. Features

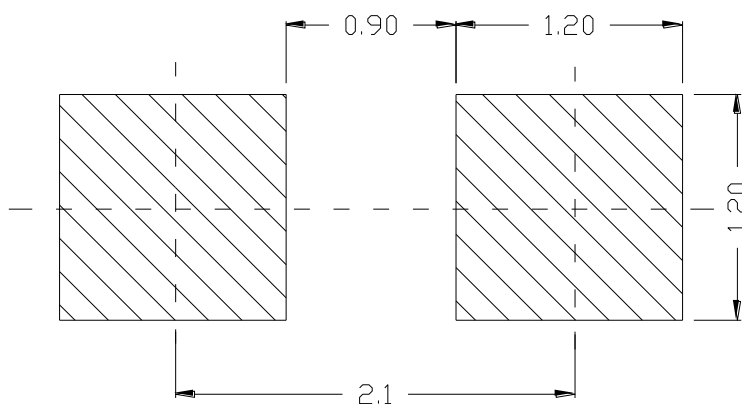
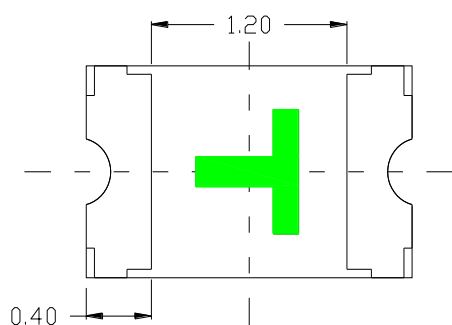
- Package (L/W/H) : $2.0 \times 1.25 \times 1.1\text{mm}$
- Color : Ultra Bright White
- Lens: Yellow Diffuse Flat Mold
- EIA STD Package
- Meet ROHS, Green Product
- Compatible With SMT Automatic Equipment
- Compatible With Infrared Reflow Solder Process

2. Package Profile & Soldering PAD Suggested

Package Profile:



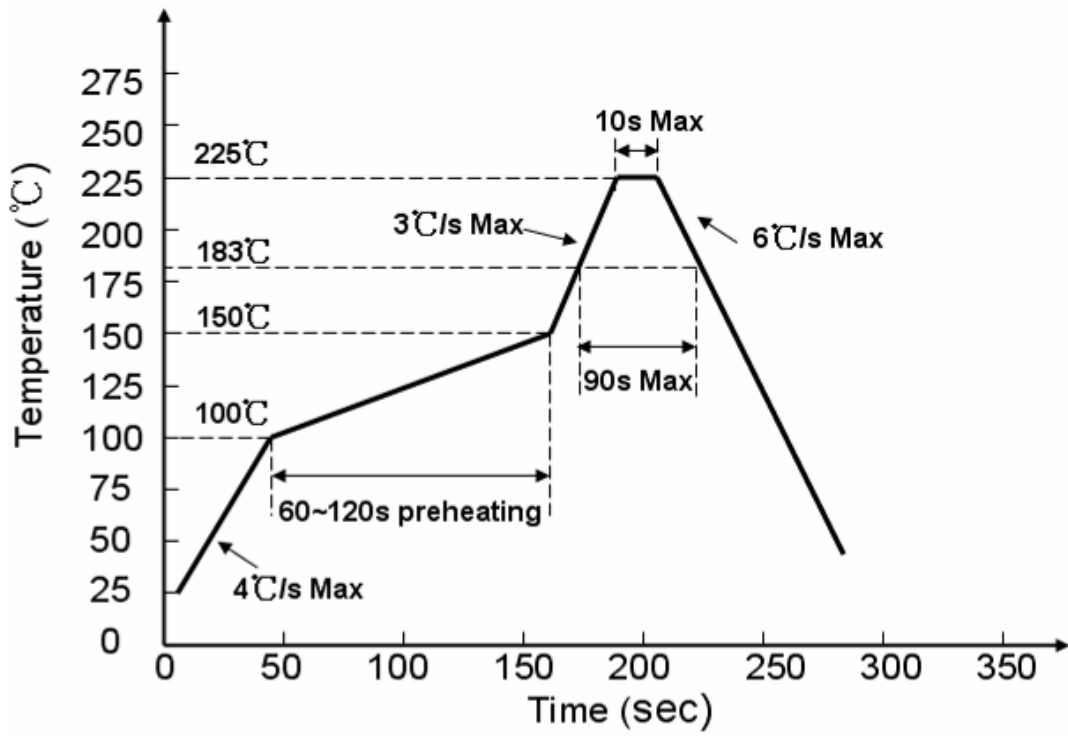
Soldering PAD Suggested:



- Notes: 1. All dimensions are in millimeters ;
2. Tolerance is ± 0.10 mm unless otherwise noted.

3. Soldering Profile Suggested

3.1、 For Lead Solder



3.2、 For Lead Free Solder

4. Absolute Maximum Ratings At Ta=25°C

Parameter	Symbol	Rating	Unit
-----------	--------	--------	------

Power Dissipation	Pd	75	mW
Peak Forward Current (1/10 Duty Cycle, 0.1ms Pulse Width)	IFP	100	mA
DC Forward Current	IF	25	mA
Reverse Voltage	VR	5	V
Operating Temperature Range	Topr	-30°C ~ +85°C	
Storage Temperature Range	Tstg	-40°C ~ +90°C	
Soldering Condition	Tsol	Reflow soldering : 260°C For 5 Seconds Hand soldering: 300°C For 3 Seconds	
ESD CLASS	ESD	2000	V

5. Electrical Optical Characteristics At Ta=25°C

Parameter	Symbol	Min.	Typ.	Max.	Unit	Test Condition
Luminous Intensity	IV	350	--400	450	mcd	IF = 5mA

Viewing Angle	2θ1/2	---	120	---	deg	IF = 5mA
CIE 1931 Coordinate	X/Y	X:0.288 Y:0.0287	X:0.30 Y:0.32	X:0.333 Y:0.335		IF=5mA
Color Temperature	CCT	5500-	7000	--1200	K	IF=5mA
Forward Voltage	VF	2.8	---	3.4	V	IF=5mA
Reverse Current	IR	---	---	5	uA	VR=5V

- Notes: 1. Luminous intensity is measured with a light sensor and filter combination that approximates the CIE eye-response curve.
2. θ1/2 is the off-axis angle at which the luminous intensity is half the axial luminous intensity.
3. The dominant wavelength, λd is derived from the CIE chromaticity diagram and represents the single wavelength which defines the color of the device.

6. General Characteristics

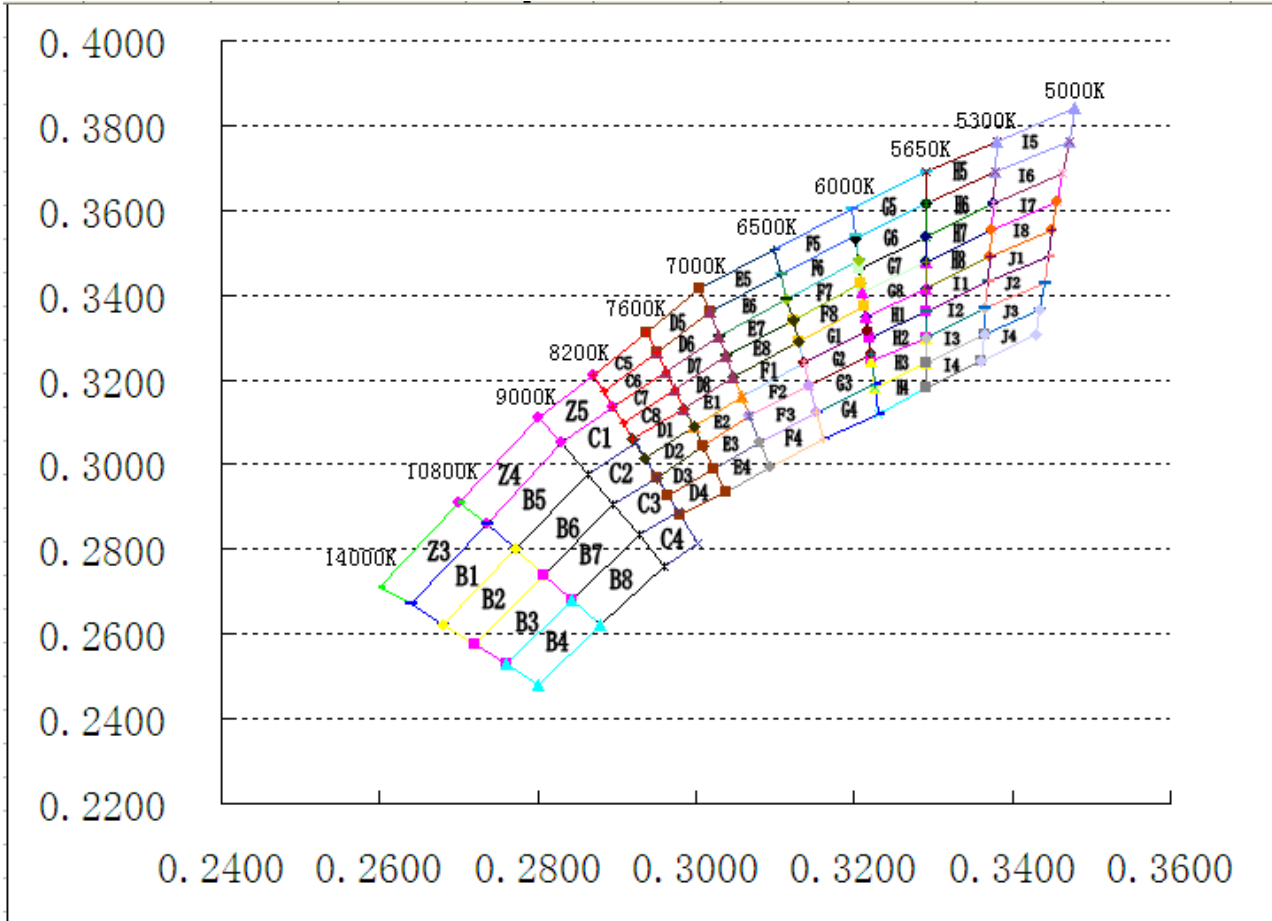
Bin Range of Luminous Intensity

Bin	Min	Max	Unit	Condition
M1	180	230	mcd	IF=5mA
M2	230	285		
N1	285	350		
N2	350	450		
P1	450	560		

Bin Range of Forward Voltage

Bin	Min	Max	Unit	Condition
5B	2.7	2.8	V	IF=5mA
6A	2.8	2.9		
6B	2.9	3.0		
7A	3.0	3.1		
7B	3.1	3.2		

Chromaticity Coordinate Groups



Bin Code	CIE-X	CIE-Y	Bin Code	CIE-X	CIE-Y	Bin Code	CIE-X	CIE-Y	Bin Code	CIE-X	CIE-Y
H1	0.3215	0.3350	G5	0.3202	0.3532	F5	0.3099	0.3509	E5	0.3005	0.3415
	0.3219	0.3297		0.3290	0.3614		0.3107	0.3450		0.3017	0.3360
	0.3290	0.3359		0.3290	0.3690		0.3201	0.3542		0.3107	0.3450
	0.3290	0.3417		0.3196	0.3602		0.3196	0.3602		0.3099	0.3509
H2	0.3219	0.3297	G6	0.3202	0.3532	F6	0.3107	0.3450	E6	0.3017	0.3360
	0.3222	0.3243		0.3207	0.3462		0.3115	0.3391		0.3028	0.3304
	0.3290	0.3300		0.3290	0.3537		0.3205	0.3481		0.3115	0.3391
	0.3290	0.3359		0.3290	0.3614		0.3201	0.3542		0.3107	0.3450
H3	0.3222	0.3243	G7	0.3207	0.3462	F7	0.3115	0.3391	E7	0.3028	0.3304
	0.3227	0.3182		0.3211	0.3406		0.3123	0.3341		0.3038	0.3256
	0.3290	0.3240		0.3290	0.3477		0.3209	0.3427		0.3123	0.3341
	0.3290	0.3300		0.3290	0.3537		0.3205	0.3481		0.3115	0.3391

H4	0.3227	0.3182	G8	0.3211	0.3406	F8	0.3123	0.3341	E8	0.3038	0.3256
	0.3231	0.3120		0.3215	0.3350		0.3130	0.3290		0.3048	0.3207
	0.3290	0.3180		0.3290	0.3417		0.3213	0.3373		0.3130	0.3290
	0.3290	0.3240		0.3290	0.3477		0.3209	0.3427		0.3123	0.3341
G1	0.3130	0.3290	F1	0.3048	0.3207	E1	0.2984	0.3133	D1	0.2920	0.3060
	0.3137	0.3238		0.3058	0.3160		0.2997	0.3088		0.2935	0.3015
	0.3217	0.3317		0.3137	0.3238		0.3058	0.3160		0.2997	0.3088
	0.3213	0.3373		0.3130	0.3290		0.3048	0.3207		0.2984	0.3133
G2	0.3137	0.3238	F2	0.3058	0.3160	E2	0.2997	0.3088	D2	0.2935	0.3015
	0.3144	0.3186		0.3068	0.3113		0.3009	0.3042		0.2950	0.2970
	0.3221	0.3261		0.3144	0.3186		0.3068	0.3113		0.3009	0.3042
	0.3217	0.3317		0.3137	0.3238		0.3058	0.3160		0.2997	0.3088
G3	0.3144	0.3186	F3	0.3068	0.3113	E3	0.3009	0.3042	D3	0.2950	0.2970
	0.3153	0.3123		0.3081	0.3053		0.3023	0.2990		0.2965	0.2925
	0.3226	0.3191		0.3153	0.3123		0.3081	0.3053		0.3023	0.2990
	0.3221	0.3261		0.3144	0.3186		0.3068	0.3113		0.3009	0.3042
G4	0.3153	0.3123	F4	0.3081	0.3053	E4	0.3023	0.2990	D4	0.2965	0.2925
	0.3161	0.3059		0.3093	0.2993		0.3037	0.2937		0.2980	0.2880
	0.3231	0.3120		0.3161	0.3059		0.3093	0.2993		0.3037	0.2937
	0.3226	0.3191		0.3153	0.3123		0.3081	0.3053		0.3023	0.2990
D5	0.2937	0.3312	C5	0.2883	0.3172	C1	0.2830	0.3050	B5	0.2735	0.2860
	0.2950	0.3266		0.2870	0.3210		0.2863	0.2978		0.2772	0.2800
	0.3017	0.3360		0.2937	0.3312		0.2923	0.3052		0.2863	0.2978
	0.3005	0.3415		0.2950	0.3266		0.2895	0.3134		0.2830	0.3050
D6	0.2950	0.3266	C6	0.2883	0.3172	C2	0.2863	0.2978	B6	0.2772	0.2800
	0.2962	0.3220		0.2950	0.3266		0.2895	0.2905		0.2808	0.2740
	0.3028	0.3304		0.2962	0.3220		0.2950	0.2970		0.2895	0.2905
	0.3017	0.3360		0.2895	0.3134		0.2923	0.3052		0.2863	0.2978
D7	0.2962	0.3220	C7	0.2895	0.3134	C3	0.2895	0.2905	B7	0.2808	0.2740
	0.2973	0.3177		0.2908	0.3097		0.2928	0.2833		0.2844	0.2680
	0.3038	0.3256		0.2973	0.3177		0.2977	0.2891		0.2928	0.2833
	0.3028	0.3304		0.2962	0.3220		0.2950	0.2970		0.2895	0.2905
D8	0.2973	0.3177	C8	0.2908	0.3097	C4	0.2928	0.2833	B8	0.2844	0.2680
	0.2984	0.3133		0.2920	0.3060		0.2977	0.2891		0.2928	0.2833
	0.3048	0.3207		0.2984	0.3133		0.3003	0.2812		0.2960	0.2760
	0.3038	0.3256		0.2973	0.3177		0.2960	0.2760		0.2880	0.2620
Z4	0.27	0.291	Z5	0.28	0.311	H7	0.3290	0.3538	I8	0.3374	0.3553
	0.28	0.311		0.2871	0.321		0.3290	0.3478		0.3371	0.3490
	0.283	0.305		0.2895	0.3134		0.3374	0.3553		0.3451	0.3554
	0.2735	0.286		0.283	0.305		0.3376	0.3616		0.3457	0.3621
Z3	0.26	0.271	I1	0.3290	0.3417	J1	0.3371	0.3490	H8	0.3290	0.3478
	0.27	0.291		0.3290	0.3359		0.3369	0.3430		0.3290	0.3417

	0.2735	0.286		0.3369	0.3430		0.3446	0.3491		0.3371	0.3490
	0.264	0.267		0.3371	0.3490		0.3451	0.3554		0.3374	0.3553
B1	0.2640	0.2670	I2	0.3290	0.3359	J2	0.3369	0.3430	I7	0.3376	0.3616
	0.2680	0.2623		0.3290	0.3300		0.3366	0.3369		0.3374	0.3553
	0.2772	0.2800		0.3366	0.3369		0.3440	0.3427		0.3457	0.3621
	0.2735	0.2860		0.3369	0.3430		0.3446	0.3491		0.3463	0.3687
B2	0.2720	0.2575	I3	0.3290	0.3300	J3	0.3366	0.3369	H6	0.3290	0.3614
	0.2680	0.2623		0.3290	0.3240		0.3364	0.3307		0.3290	0.3538
	0.2772	0.2800		0.3364	0.3307		0.3435	0.3367		0.3376	0.3616
	0.2808	0.2740		0.3366	0.3369		0.3440	0.3427		0.3379	0.3689
B3	0.2720	0.2575	I4	0.3290	0.3240	J4	0.3364	0.3307	I6	0.3379	0.3689
	0.2760	0.2528		0.3290	0.3180		0.3361	0.3245		0.3376	0.3616
	0.2844	0.2680		0.3361	0.3245		0.3429	0.3307		0.3463	0.3687
	0.2808	0.2740		0.3364	0.3307		0.3435	0.3367		0.3472	0.3764
B4	0.2760	0.2528	I5	0.3381	0.3762	H5	0.3290	0.3690			
	0.2844	0.2680		0.3379	0.3689		0.3290	0.3614			
	0.2880	0.2620		0.3472	0.3764		0.3379	0.3689			
	0.2800	0.2480		0.3480	0.3840		0.3381	0.3762			

Notes: Tolerance of the CIE X,Y : +/-0.005

7. Typical Electrical-Optical Characteristics Curves

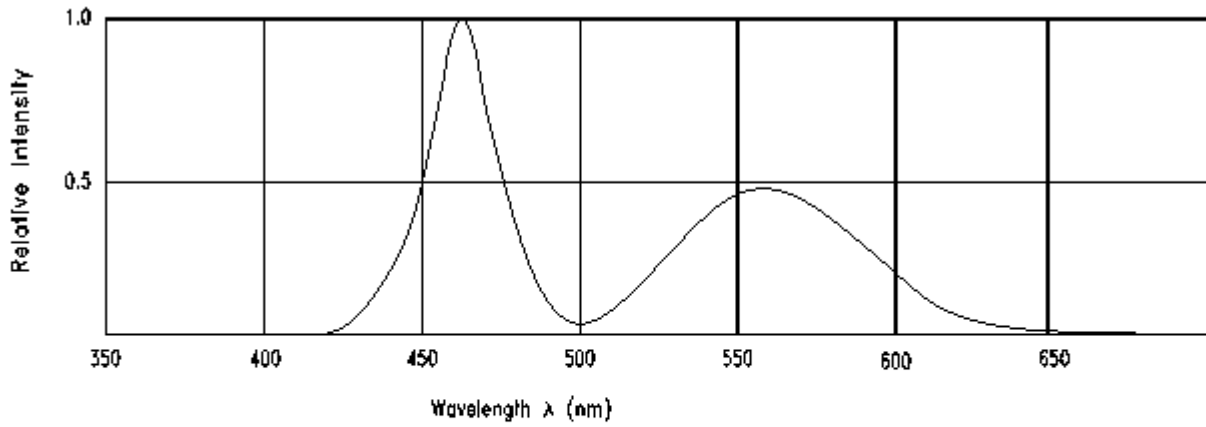


Fig.1 Relative Intensity vs. Wavelength

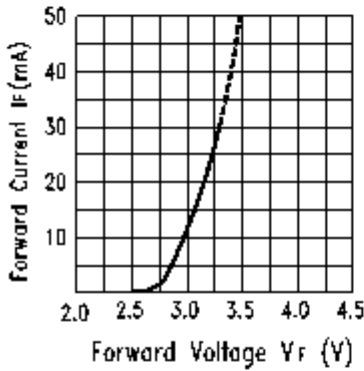


Fig.2 Forward Current vs. Forward Voltage

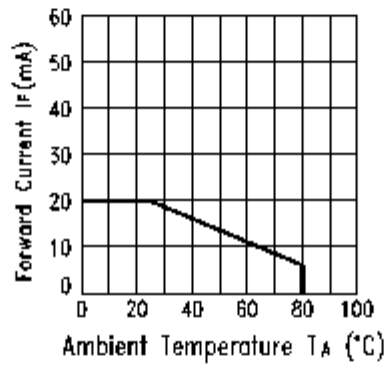


Fig.3 Forward Current Derating Curve

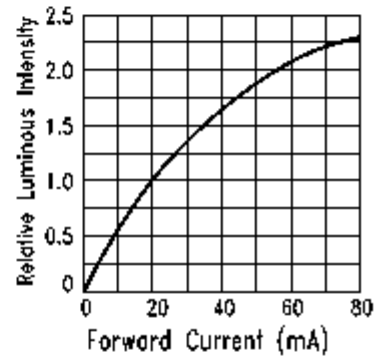


Fig.4 Relative Luminous Intensity vs. Forward Current

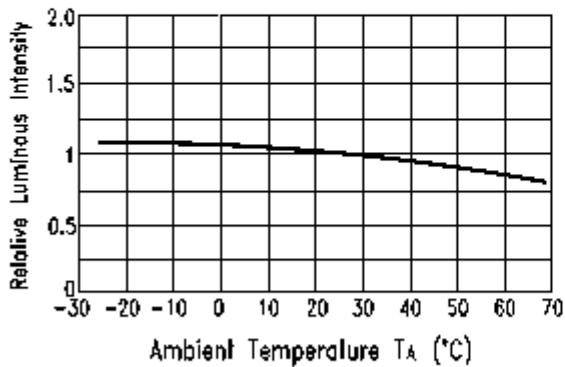


Fig.5 Luminous Intensity vs. Ambient Temperature

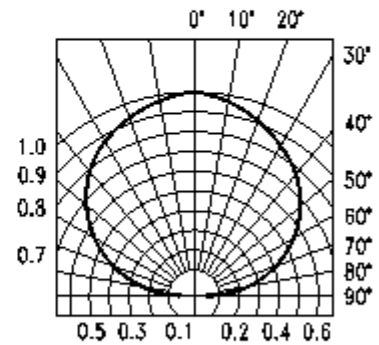


Fig.6 Spatial Distribution

8. Label Explanation

CAT: Luminous Intensity Rank (unit : mcd)

HUE: CIE 1931 Coordinate Rank

REF: Forward Voltage Rank (unit : V)

Rank Tolerance:

a. Luminous Intensity: $\pm 11\%$

b. HUE: ± 0.005

c. Forward Voltage: $\pm 0.02V$

HUAYUGUANG

CPN:XXXXXXXX

P/N:

RoHS



XXXXXXXXXXXXXXXXXXXX

D: XX

QTY: XXXXX

CAT: XXXX



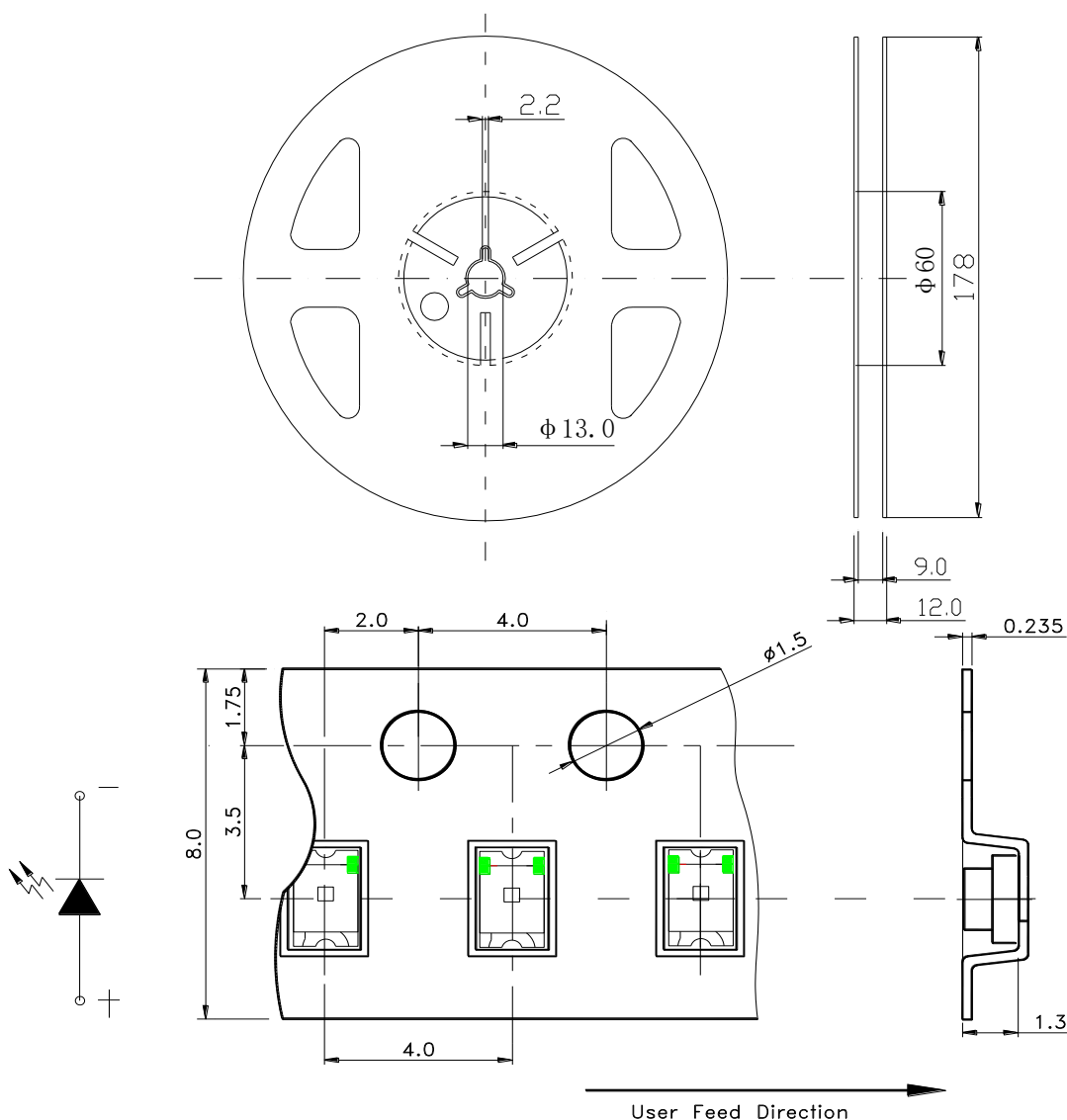
HUE: XXXX

REF: XXXX

LOTNO:XXXXXXXXXXXXXXXX

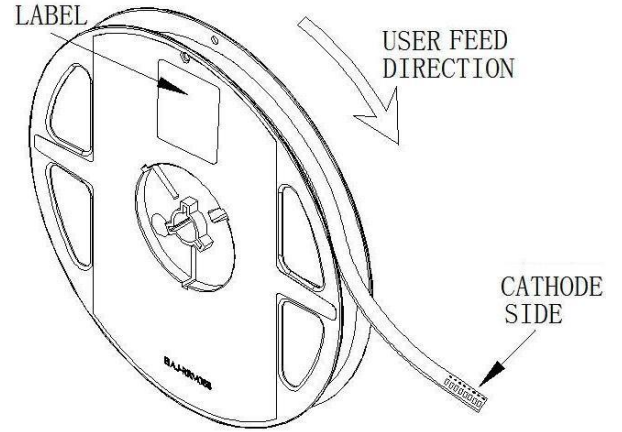
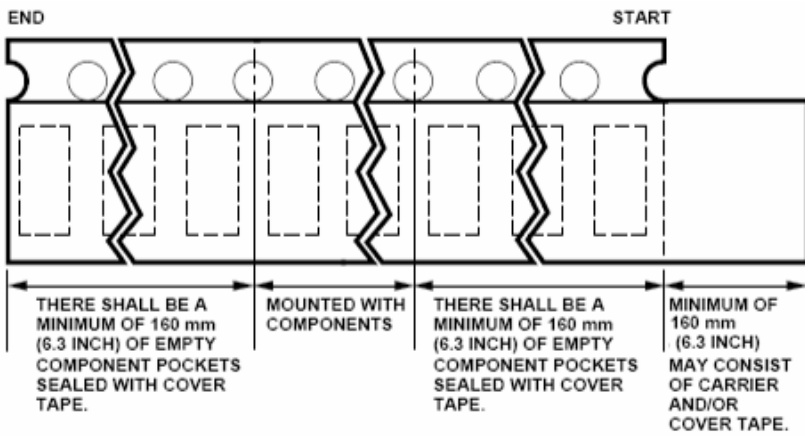


9.Reel And Tape Dimensions:

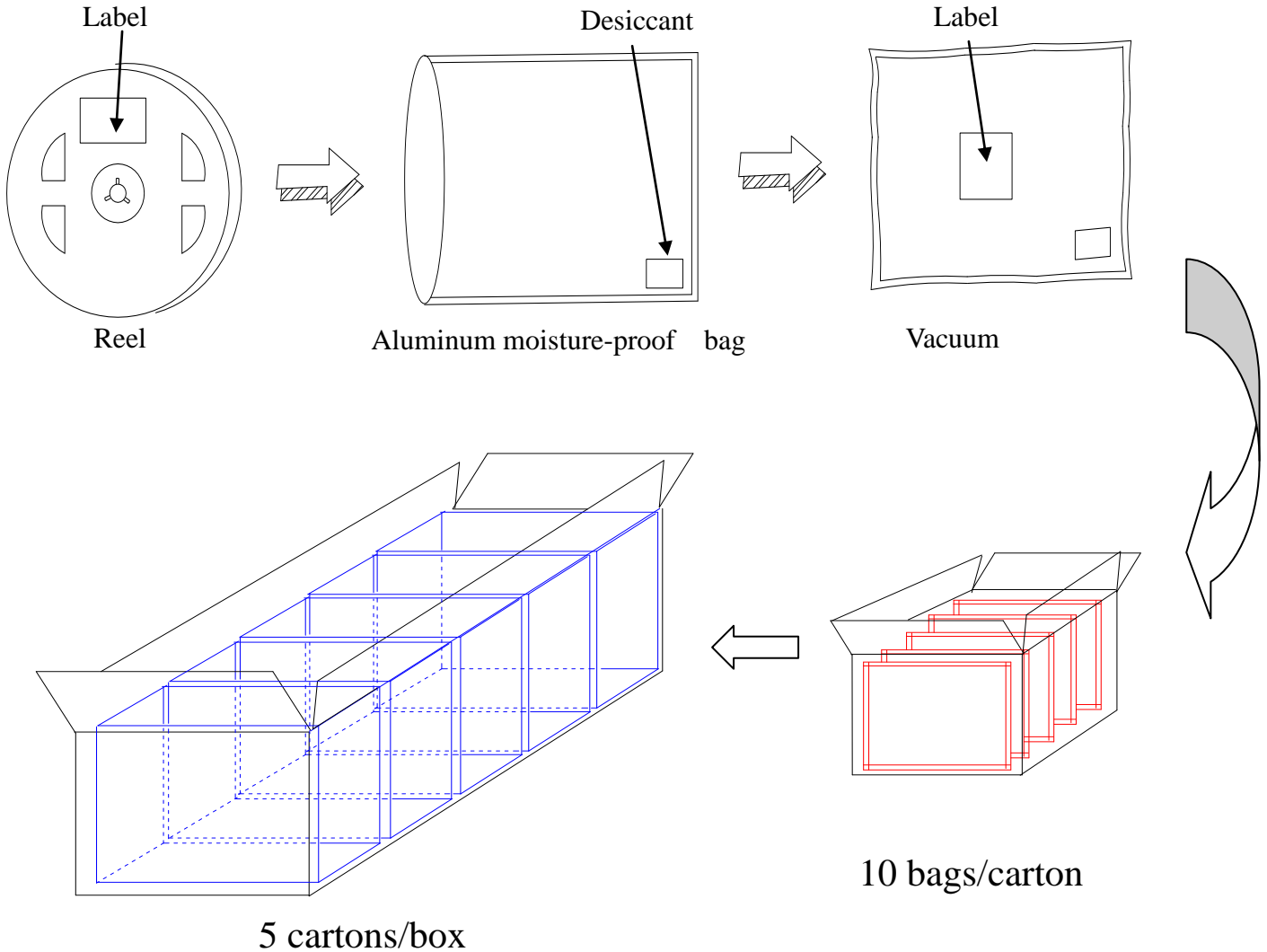


- Notes: 1. All dimensions are in millimeters ;
2. Tolerance is ± 0.1 mm unless otherwise noted.

10. Tape Leader & Trailer Dimensions And Reel



11. Packaging:



12. Reliability Test

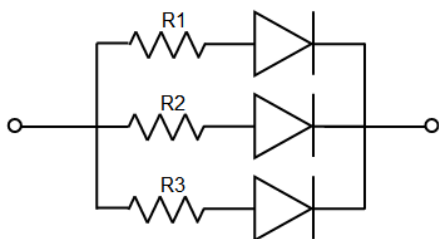
Classification	Test Item	Test Condition	Reference Standard	Reference Standard

Endurance Test	Operation Life	Ta= Under Room Temperature As Per Data Sheet Maximum Rating	1000HRS (-24HRS,+72HRS)*@20mA	MIL-STD-750D:1026 MIL-STD-883D:1005 JIS C 7021:B-1
	High Temperature, High Humidity Storage	IR-Reflow In-Board, 2 Times Ta=85±5°C,RH= 85%	1000HRS±2HRS	JESD22-A101
	High Temperature Storage	Ta= 105±5°C	1000HRS (-24HRS,+72HRS)	MIL-STD-883D:1008 JIS C 7021:B-10
	Low Temperature Storage	Ta= -55±5°C	1000HRS (-24HRS,+72HRS)	JIS C 7021:B-12
Environmental Test	Temperature Cycling	105°C ~ 25°C ~ -55°C ~ 25°C 30mins 5mins 30mins 5mins	10 Cycles	MIL-STD-202F:107D MIL-STD-750D:1051 MIL-STD-883D:1010 JIS C 7021:A-4
	Thermal Shock	IR-Reflow In-Board, 2 Times 85 ± 5°C ~ -40°C± 5°C 10mins 10mins	10 Cycles	MIL-STD-202F:107D MIL-STD-750D:1051 MIL-STD-883D:1011
	Solder Resistance	T.sol= 260 ± 5°C	10 ± 1secs	MIL-STD-202F:210A MIL-STD-750D:2031 JIS C 7021:A-1
	IR-Reflow Normal Process	Ramp-up rate(183°Cto Peak) +3°C/ second max Temp. maintain at 125(±25)°C120 seconds max Temp. maintain above 183°C60-150 seconds Peak temperature range 235°C±5/-0°C Time within 5°C of actual Peak Temperature (tp) 10-30 seconds Ramp-down rate +6°C/second max	-----	MIL-STD-750D:2031.2 J-STD-020C
	IR-Reflow Pb Free Process	Ramp-up rate(217°Cto Peak) +3°C/ second max Temp. maintain at 175(±25)°C180 seconds max Temp. maintain above 217°C60-150 seconds Peak temperature range 260°C±0/-5°C Time within 5°C of actual Peak Temperature (tp) 20-40 seconds Ramp-down rate +6°C/second max	-----	MIL-STD-750D:2031.2 J-STD-020C
	Solderability	T.sol= 235 ± 5°C Immersion rate 25±2.5 mm/sec Coverage ≥95% of the dipped surface	Immersion time 2±0.5 sec	MIL-STD-202F:208D MIL-STD-750D:2026 MIL-STD-883D:2003 IEC 68 Part 2-20 JIS C 7021:A-2

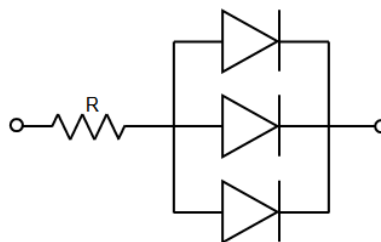
12. Cautions

Application

1. A LED is a current-operated device. The slight shift of voltage will cause big change of current, which will damage LEDs. Customer should use resistors in series for the Over-Current-Proof.
2. In order to ensure intensity uniformity on multiple LEDs connected in parallel in an application, it is recommended to use individual resistor separately, as shown in Circuit A below. The brightness of each LED shown in Circuit B might appear difference due to the differences in the I-V characteristics of those LEDs.



Circuit model A



Circuit model B

3. High temperature may reduce LEDs' intensity and other performances, so keeping it away from heat source to get good performance is necessary.

Storage

1. Before opening original package, it is recommended to store them in the following environment:
Temperature: 5°C~30°C; Humidity: 85%RH max. When the inventory over 2 months, should be done before treatment using dehumidification, Temperature: 60°C/8 hours.
2. After opening original package, the storage ambient for the LEDs should be in 5~30°C temperature and 60% or less relative humidity.
3. In order to avoid moisture absorption, it is recommended that the LEDs that out of the original package should be stored in a sealed container with appropriate desiccant, or in desiccators with nitrogen ambient.
4. The LEDs should be used within 168hrs (7 days) after opening the package. Once been mounted, soldering should be quick.
5. If the moisture absorbent material (silica gel) has faded away or the LEDs stored out of original package for more than 168hrs (7 days), baking treatment should be performed using the conditions: 60°C at least 24 hours.

ESD (Electrostatic Discharge)-Protection

A LED (especially the Blue、 White and Green product) is an ESD sensitive component, and static electricity or power surge will damage the LED. ESD-damaged LEDs will exhibit abnormal characteristics such as high reverse leakage current, low forward voltage, or “no light-up” at low currents, etc.

Some advice as below should be noticed:

1. A conductive wrist strap or anti-electrostatic glove should be worn when handling these LEDs.
2. All devices, equipment, machinery, work tables and storage racks, etc. must be properly grounded (Grounding impedance value within 10Ω) .

3. Use anti-static package or boxes to carry and storage LEDs. And ordinary plastic package or boxes is forbidden to use.
4. Use ionizer to neutralize the static charge during handling or operating.
5. All surfaces and objects within 1 ft close to LEDs measure less than 100V.

Cleaning

Use alcohol-based cleaning solvents such as IPA (isopropyl alcohol) to clean LEDs if necessary.

Soldering

1. Soldering condition refer to the draft “Soldering Profile Suggested” on page 1.
2. Reflow soldering should not be done more than 2 times.
3. Manual soldering is only suggested on repair and rework. The maximum soldering temperature should not exceed 300°C within 3 sec. And the maximum capacity of soldering iron is 30W in power.
4. During the soldering process, do not touch the lens at high temperature.
5. After soldering, any mechanical force on the lens or any excessive vibration shall not be accepted to apply, also the circuit board shall not be bent as well.

Others

1. The LEDs described here are intended to be used for ordinary electronic equipment (such as office equipment, communication equipment and household applications).Consult Harvatek’s Sales in advance for the applications in which exceptional reliability is required, particularly when the failure or malfunction of the LEDs may directly jeopardize life or health. (such as in aviation, transportation, traffic control equipment, medical and life support systems and safety devices).
2. The light output from the high luminous intensity LEDs may cause injury to human eyes when viewed directly.
3. The appearance and specifications of the product may be modified for improvement without prior notice.